



For FAQs and more information, please visit:

[www.eufylife.com](http://www.eufylife.com)



Cleaning

**Owner's Manual**

**RoboVac 11**

## Table of Contents

### **02 Important Safety Instructions**

### **04 About Your RoboVac**

What's In the Box

RoboVac Anatomy

### **07 Using Your RoboVac**

Important tips before use

Before You Start

Install the Charging Base

Charge Your RoboVac

Start/Stop Cleaning

Cleaning Modes

Time Setting

Scheduled Cleaning

### **15 Cleaning and Maintenance**

Clean the Dust Collector and Filters

Clean the Rolling Brush

Clean the Sensors and Charging Pins

Clean the Side Brushes

Replace the Side Brushes

### **18 Troubleshooting**

### **20 Specifications**

### **20 Notice**

### **21 Customer Service**

## Important Safety Instructions

To reduce the risk of injury or damage, read these safety instructions carefully and keep them at hand when setting up, using and maintaining this device.



### WARNING SYMBOLS USED

This is the safety alert symbol. This symbol alerts you to potential hazards that could result in property damage and/or serious bodily harm or death.

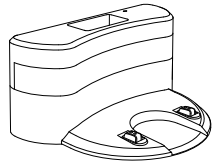
- This device is not intended for use by persons (including children) with reduced physical, sensory or mental capabilities, or lack of experience and knowledge, unless they have been given supervision or instruction concerning use of the device by a person responsible for their safety.
- This device can be used by children aged from 8 years and above and persons with reduced physical, sensory or mental capabilities or lack of experience and knowledge if they have been given supervision or instruction concerning use of the device in a safe way and understand the hazards involved.
- Children should be supervised to ensure they do not play with the device.
- Cleaning and maintenance shall not be performed by children without adult supervision.
- The device is only to be used with the power supply unit provided.
- For the purposes of recharging the battery, only use the detachable power supply unit provided with this device.
- The battery must be removed from the device before the device is disposed of. To remove the battery from the device, unscrew the battery cover using a screwdriver. Remove the battery by disconnecting the quick connector.
- The used battery should be placed in a sealed plastic bag and disposed of safely according to local environmental regulations.
- The external flexible cable or cord of the power supply unit cannot be replaced; if the cord is damaged, the power supply unit shall be disposed of.
- This device is for indoor use only.
- This device is not a toy. Do not sit or stand on this device. Small children and pets should be supervised when this device is operating.
- Store and operate this device in room temperature environments only.
- Clean with a cloth dampened with water only.
- Do not use this device to pick up anything that is burning or smoking.
- Do not use this device to pick up spills of bleach, paint, chemicals, or anything wet.
- Before using this device, pick up objects like clothing and loose paper, lift up cords for blinds or curtains, and move power cords and fragile objects out of the way. If the device passes over a power cord and drags it, an object could be pulled off a table or shelf.
- If the room to be cleaned has a balcony, a physical barrier should be used to prevent access to the balcony and to ensure safe operation.
- Do not place anything on top of this device.
- Be aware that the device moves around on its own. Take care when walking in the area where the device is operated to avoid stepping on it.
- Do not operate the device in areas with exposed electrical outlets on the floor.
- Do not expose the electronics of this device, its battery, or the integrated Charging Base. There are no user-serviceable parts inside.
- Do not use this device on an unfinished, unsealed, waxed or rough floor. It may result in damage to the floor and the device. Use only on hard floor surfaces or low-pile carpet.
- This device has been designed to be used on floors without scratching them. We still recommend that you test the device on a small area to ensure no scratches are left before cleaning the whole room.

# About Your RoboVac

## What's In the Box



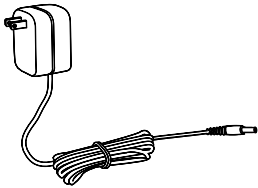
RoboVac 11



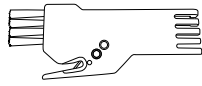
Charging Base



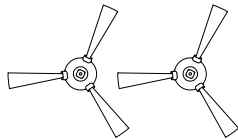
Remote Control



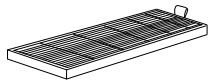
Power Adapter



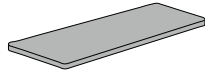
Cleaning Tool



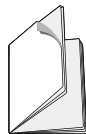
Side Brush (×4)



Spare HEPA-style Filter



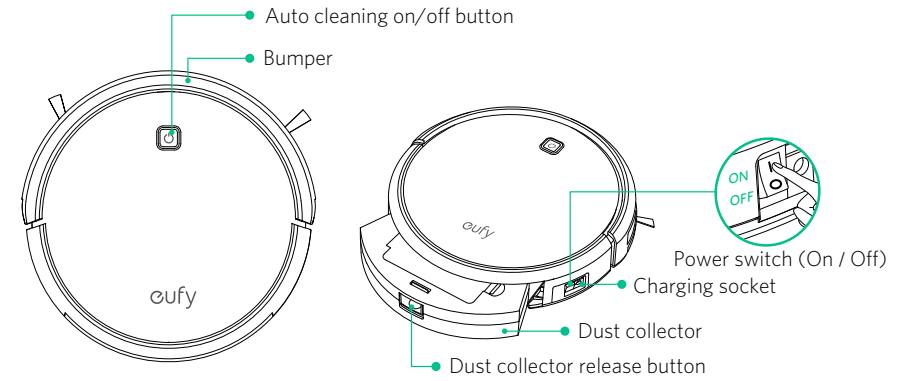
Spare Foam Filter



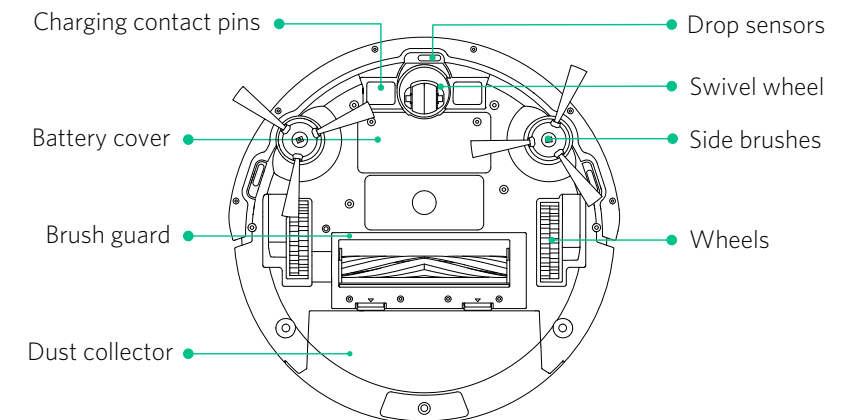
Owner's Manual

## RoboVac Anatomy

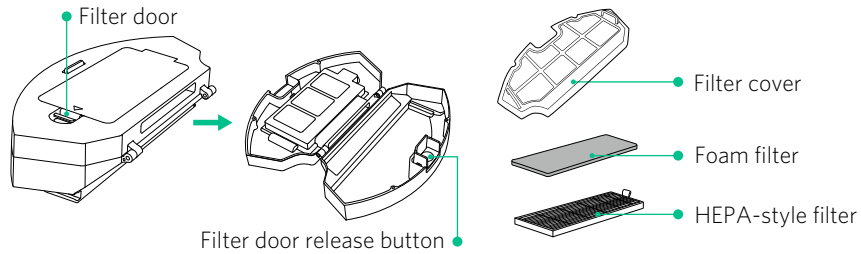
### Top & Side



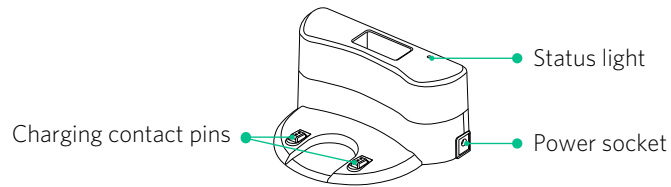
### Bottom



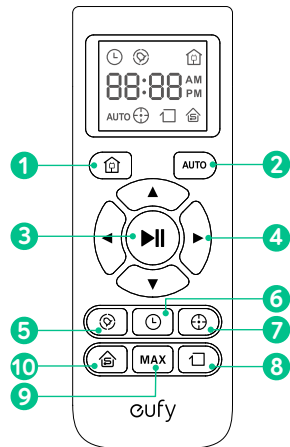
## Dust Collector



## Charging Base



## Remote Control



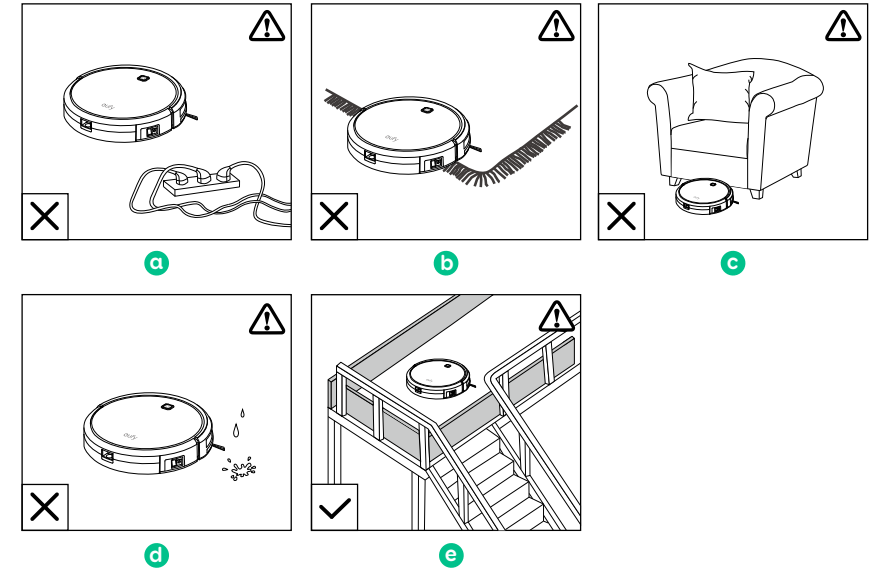
- 1 Return RoboVac to the Charging Base
- 2 Start Auto cleaning
- 3 Start / Stop cleaning
- 4 Adjust direction manually
- 5 Schedule cleaning start time
- 6 Set the current time
- 7 Start Spot cleaning
- 8 Start Edge cleaning
- 9 Start Max cleaning
- 10 Start Single Room cleaning



Install 2 AAA batteries before using the remote control for the first time. Make sure the positive and negative ends are facing the correct polarity direction as marked in the battery compartment.

## Using Your RoboVac

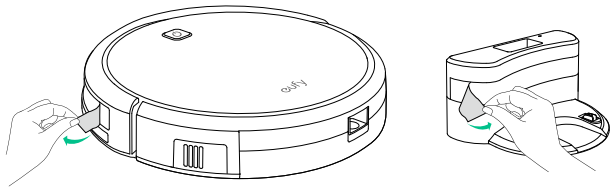
### Important tips before use



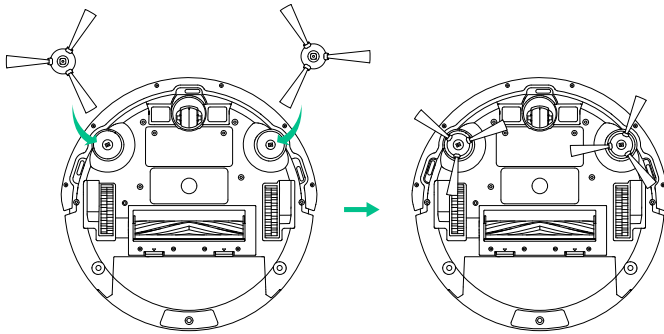
- a Remove power cords and small objects from the floor that may entangle RoboVac.
- b Remove rugs that are thicker than 0.4 in/10 mm as they may cause RoboVac to malfunction. Fold tasseled edges of area rugs underneath to prevent tangling RoboVac. Do not use RoboVac on middle or long-pile carpeting.
- c Avoid cleaning spaces lower than 3.9 in/98 mm to prevent RoboVac from getting stuck.
- d Prevent liquid from entering RoboVac as it may cause damage.
- e Anti-drop sensors prevent RoboVac from tumbling down stairs and steep drops. They may work less effectively when they are dirty, or on reflective/dark-colored floors. It is recommended to place a physical barrier to block off problem areas where the device may fall.

## Before You Start

1. Remove the protective film covering RoboVac and the Charging Base.

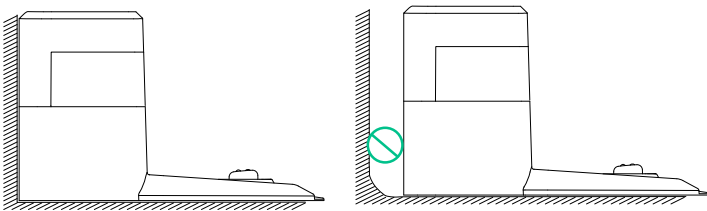


2. Flip RoboVac over and snap on the side brushes.

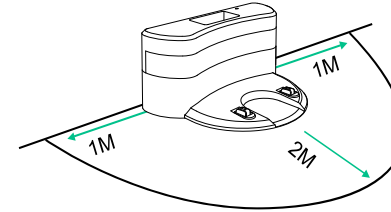


## Install the Charging Base

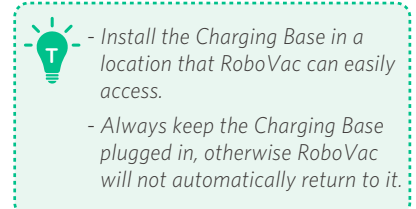
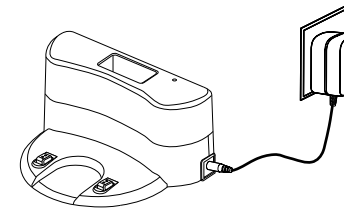
1. Place the Charging Base on a hard, level surface and against a wall.



2. Remove objects within 3 ft/1 m of the left and right side and within 6 ft/2 m of the front of the charging base.



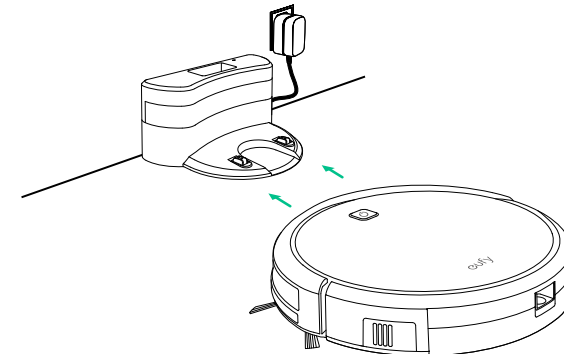
3. Connect the round connector of the adapter into the power socket on the Charging Base and the other end into a wall outlet.




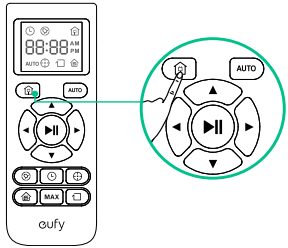
## Charge Your RoboVac

- RoboVac has a pre-installed rechargeable battery that has to be fully charged before use.
- Robovac returns to the Charging Base at the end of a cleaning cycle or when its battery is running low.
- Manually charge RoboVac when its battery is fully discharged or if it fails to reach the Charging Base.

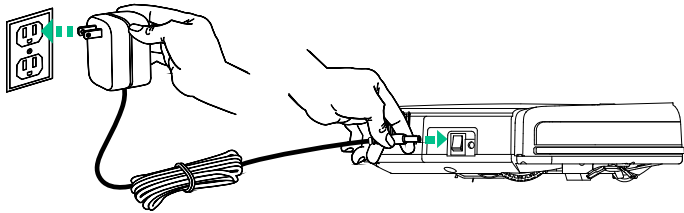
**Method 1:** Attach RoboVac to the Charging Base by aligning its charging pins with the charging pins on the base.




**Method 2:** Press  on the remote control to return RoboVac to the Charging Base.



**Method 3:** Charge RoboVac directly by plugging the round connector of the adapter into the charging socket on RoboVac and the other end into a wall outlet.



RoboVac Status Light

	Flashing red	Low power
	Flashing blue	Charging
	Solid blue	Fully charged / Cleaning / Returning to Charging Base
	Flashing / Solid red + Beeping	RoboVac has an error

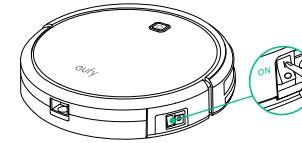


- Turn off the power switch if RoboVac will not be used for a long period of time. To preserve the battery's lifespan, recharge at least once every 3 months.
- All settings will be erased when RoboVac is turned off or when the battery power is exhausted. You will need to reset the time and reschedule the cleaning time.



## Start/Stop Cleaning

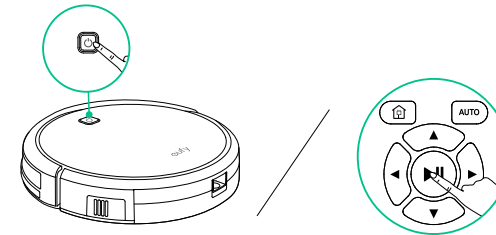
### 1. Turn the main power supply on

Press the power switch on the side of RoboVac to turn on the main power supply.





### 2. Start cleaning

Press  on RoboVac or  on the remote control to start cleaning in Auto mode.




### 3. Stop cleaning

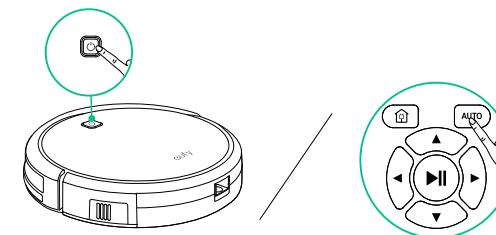
Press  on RoboVac or  on the remote control to stop cleaning.

## Cleaning Modes

### 1. Auto cleaning

RoboVac calculates the room size and optimizes its path by selecting different cleaning modes automatically until cleaning is complete.

Press  on RoboVac or **AUTO** on the remote control to start cleaning in Auto Mode.



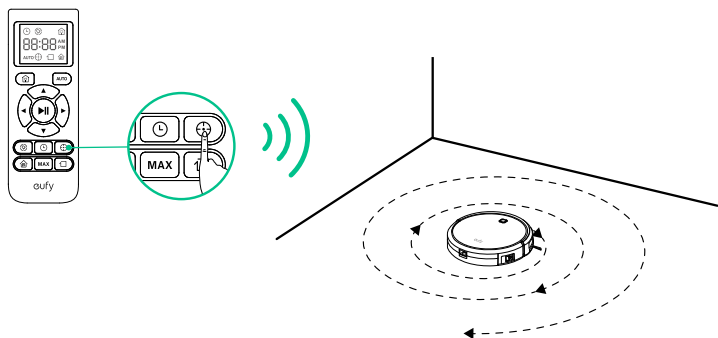


- RoboVac will return to the Charging Base automatically when the power level becomes low.
- Whenever you turn RoboVac on, it will start Auto cleaning.

## 2. Spot cleaning

RoboVac intensively cleans a specific area in a spiral pattern. Useful if there is a concentrated area of dust or debris.

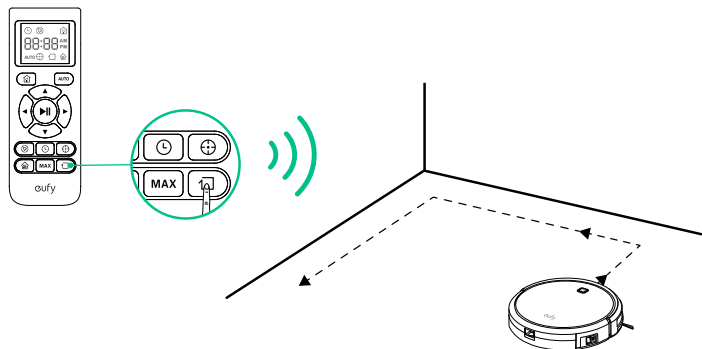
Press **+** on the remote control to start cleaning in Spot Mode.



## 3. Edge cleaning

RoboVac reduces its speed when it detects a wall and then follows the wall to ensure the edge is cleaned thoroughly.

Press **□** on the remote control to start cleaning in Edge Mode.



## 4. Max cleaning

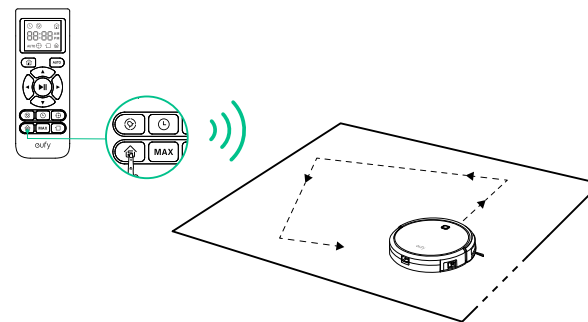
RoboVac starts Auto cleaning with the maximum suction power. This is ideal for cleaning carpets.

Press **MAX** on the remote control to start cleaning in Max Mode.

## 5. Single Room cleaning

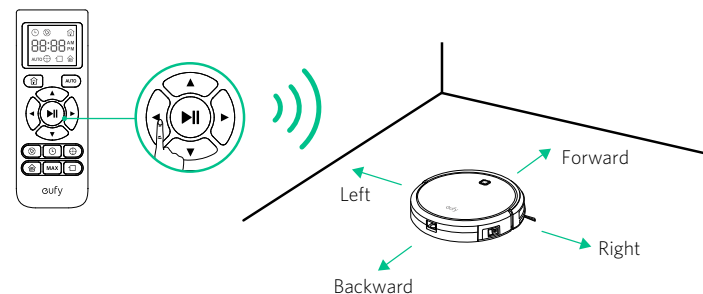
RoboVac intensively cleans one single room and stops when cleaning is complete. Select this mode only when one specific room needs to be cleaned. Make sure to confine RoboVac to the room by closing the door.

Press **🏠** on the remote control to start cleaning in Single Room Mode.



## 6. Manual cleaning



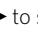
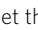
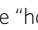
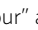


You can direct RoboVac to clean a particular area by using the directional buttons on the remote control.

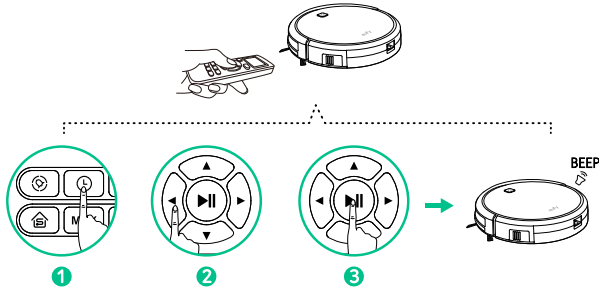





## Time Setting

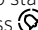

 Make sure you point the remote control directly at RoboVac and RoboVac is on.


- 1 Press  on the remote control.  will display on the screen.
- 2 Press     to set the "hour" and "minute".
- 3 Press  or  to save the setting. RoboVac will **BEEP** once to indicate the time has been set.



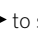

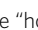
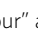




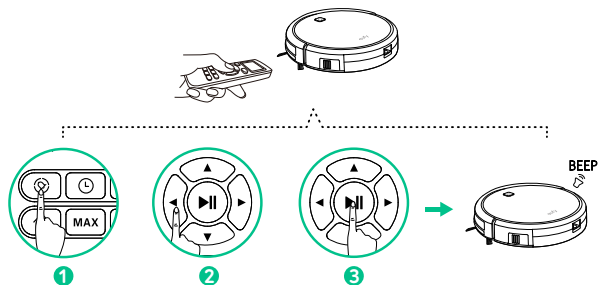
 To ensure the time is set successfully, point the remote control directly at RoboVac and make sure RoboVac is on. You will hear a beep when the time has been set.

## Scheduled Cleaning

You can schedule RoboVac to start cleaning at a particular time. To cancel a previously scheduled cleaning, long press  for 3 seconds until RoboVac beeps twice and  disappears.

 - You must set the time before setting a scheduled cleaning.  
- Make sure the time has been set correctly and you point the remote control directly at RoboVac.

- 1 Press  on the remote control.  will display on the screen.
- 2 Press     to set the "hour" and "minute".
- 3 Press  or  to save the setting. RoboVac will **BEEP** once to indicate the schedule has been set.

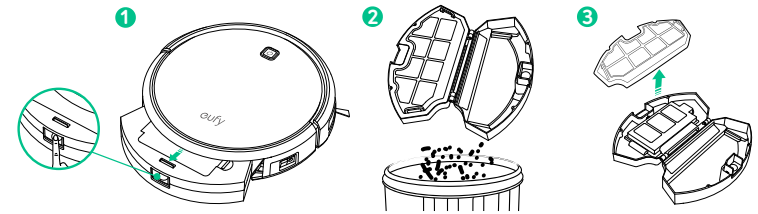


- To ensure the schedule is set successfully, point the the remote control directly at RoboVac and make sure RoboVac is on. You will hear a beep when the schedule has been set.
- When using the Power Adaptor to charge RoboVac, you cannot set a scheduled clean, and the previously scheduled cleaning will not start.
- All settings will be erased when RoboVac is turned off or when the battery power is exhausted. You will need to reset the time and reschedule the cleaning time.

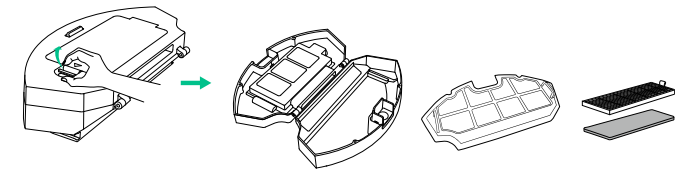
## Cleaning and Maintenance

### Clean the Dust Collector and Filters

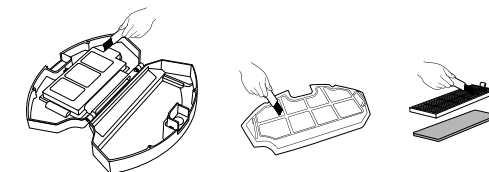
- 1 Press the dust collector release button to pull the dust collector out.
- 2 Open and empty the dust collector.
- 3 Separate the filter cover by pulling the hooks as shown.



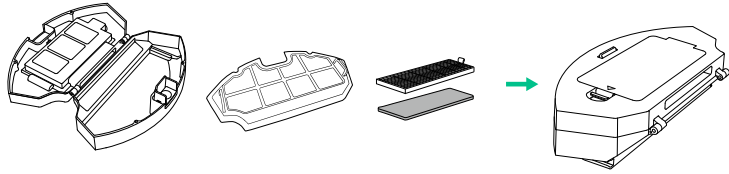
- 4 Press the filter door release button to open the filter door and take out the filters.



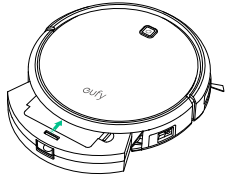
- 5 Clean the dust collector and filter with a vacuum cleaner or a cleaning brush.



- 6 Put the filters and filter cover back together in the dust collector and close it.



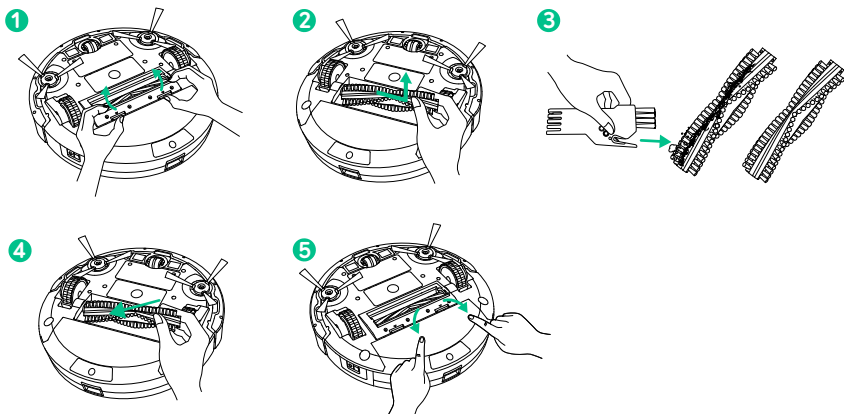
- 7 Push the dust collector back into the main unit.



- It is recommended to empty the dust collector and clean the filter after every use.
- You can wash the dust collector, filter cover and foam filter with water. Be sure to air-dry them thoroughly before reassembling. Do not wash the HEPA-Style filter with water, as it may damage the filter and reduce the suction power.

## Clean the Rolling Brush

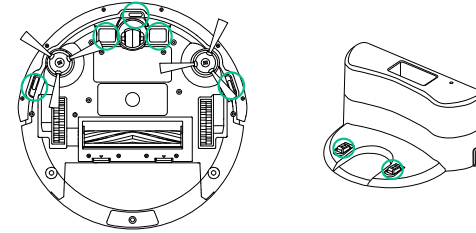
- 1 Pull on release tabs to unlock brush guard as shown.
- 2 Lift the rolling brush to remove.
- 3 Clean the rolling brush with the provided cleaning tool or a vacuum cleaner.
- 4 Reinstall the rolling brush by inserting the fixed protruding end first, then clicking into place.
- 5 Press down to snap the brush guard into place.



## Clean the Sensors and Charging Pins

To maintain best performance, clean the drop sensors and charging pins regularly.

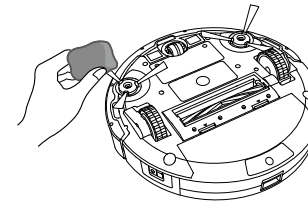
- Dust off the drop sensors and charging contact pins using a cloth or cleaning brush.



## Clean the Side Brushes

Foreign substances such as hair can easily get tangled in the side brushes and dirt may adhere to them. Be sure to clean them regularly.

- 1 Carefully unwind and pull off any hair or string that is wrapped between the main unit and the side brushes.
- 2 Use a cloth dampened with warm water to remove dust from the brushes or to gently reshape them.

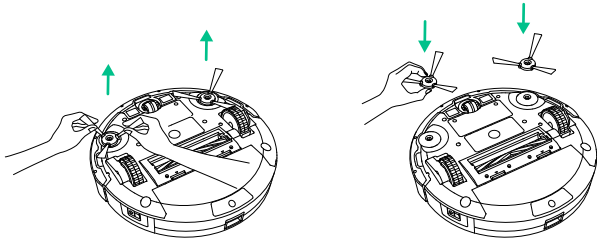


- Use the side brushes only when they are completely dry.

## Replace the Side Brushes

The side brushes may become bent or damaged after using for a period of time. Follow the steps below to replace it.

- Pull off the old side brushes and snap the new ones into place.



## Troubleshooting

Problem	Solutions
RoboVac cannot be activated.	<ul style="list-style-type: none"> <li>• Make sure the power switch is in the ON position.</li> <li>• Ensure the battery is charged.</li> <li>• Replace the batteries in the remote control (2 AAA batteries).</li> <li>• Make sure the remote control is within range (less than 3m from RoboVac).</li> </ul>
RoboVac stops working suddenly.	<ul style="list-style-type: none"> <li>• Check whether RoboVac is trapped or stuck on an obstacle.</li> <li>• Check whether the power level is too low.</li> </ul>
RoboVac does not start scheduled cleaning.	<ul style="list-style-type: none"> <li>• Make sure the time, time of day (AM/PM), and the scheduled time have been set correctly.</li> <li>• Check whether RoboVac's power is too low to start cleaning.</li> <li>• Make sure you point the remote control directly at RoboVac when setting the time/schedule. You will hear a beep when the time/schedule has been set.</li> <li>• All settings will be erased when RoboVac is turned off or when the battery power is exhausted. You will need to reset the time and reschedule the cleaning time.</li> <li>• When using the Power Adaptor to charge RoboVac, you cannot set a schedule, and the previously scheduled cleaning will not start.</li> </ul>
Suction power is weak.	<ul style="list-style-type: none"> <li>• Check whether any obstructions are blocking the suction inlet.</li> <li>• Empty the dust collector.</li> <li>• Clean the filter with a vacuum cleaner or a cleaning brush.</li> </ul>

RoboVac cannot be charged.	<ul style="list-style-type: none"> <li>• Check whether the Charging Base is plugged into the outlet.</li> <li>• Remove objects within 3 ft/1 m to the left and right side and within 6 ft/2 m of the front of the Charging Base.</li> <li>• Dust off the charging contact pins with a dry cloth.</li> </ul>
The rolling brush does not rotate.	<ul style="list-style-type: none"> <li>• Clean the rolling brush.</li> <li>• Check whether the rolling brush has been installed properly.</li> </ul>
RoboVac's movements or travel path are abnormal.	<ul style="list-style-type: none"> <li>• Clean the sensors carefully with a dry cloth.</li> <li>• Restart Robovac by turning the power switch off and on.</li> </ul>

## Error codes troubleshooting

When RoboVac is in trouble, it will emit a series of short or long beeps and the red indicator on RoboVac will be on or flashing.

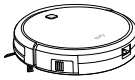

### Flashing red indicator light

Error Tone	Cause	Solution
One beep	RoboVac is hanging over a ledge or is trapped.	Turn off RoboVac and restart in a new location.
Two beeps	RoboVac's bumper is stuck.	Tap RoboVac's bumper several times to dislodge any debris that may be trapped underneath.
Three beeps	RoboVac's drop sensors are dirty.	Clean the drop sensors gently with a dry cloth.
Four beeps	RoboVac's power level is too low.	Manually charge RoboVac for at least 5 hours.

### Solid red indicator light

Error Tone	Cause	Solution
One beep	RoboVac's wheel is stuck.	Turn off RoboVac and remove any hair or debris from the wheel.
Two beeps	RoboVac's side brush is stuck.	Turn off RoboVac and remove any hair or debris from the side brush.
Three beeps	RoboVac's suction fan is stuck.	<ul style="list-style-type: none"> <li>• Turn off RoboVac, then remove and empty the dust collector.</li> <li>• Make sure the air inlet is not blocked by any hair or debris.</li> </ul>
Four beeps	RoboVac's rolling brush is stuck.	Turn off RoboVac and remove any hair or debris from the rolling brush.

## Specifications

	Product Model	T2102
	Input	19 V  0.6 A
	Voltage	DC 14.8 V
	Power Consumption	25 W
	Battery Type	DC 14.8 V Li-ion 2600 mAh
	Dust collector capacity	0.6 L
	Cleaning Time	Max 100 mins
	Charging Time	300 - 360 mins

	Input	19 V  0.6 A
	Output	19 V  0.6 A

## Notice



### The symbol on the product or its packaging indicates:

Do not dispose of electrical appliances as unsorted municipal waste, use separate collection facilities. Contact your local authority for information regarding the collection systems available. If electrical appliances are disposed of in landfills or dumps, hazardous substances can leak into the groundwater and get into the food chain, damaging your health and well-being. When replacing old appliances with new ones, the retailer is legally obliged to take back your old appliance for disposal at least free of charge.

## FCC Statement

This device complies with Part 15 of the FCC Rules. Operation is subject to the following two conditions: (1) This device may not cause harmful interference, and (2) this device must accept any interference received, including interference that may cause undesired operation.

**Warning:** Changes or modifications not expressly approved by the party responsible for compliance could void the user's authority to operate the equipment.

**Note:** This equipment has been tested and found to comply with the limits for a Class B digital device, pursuant to Part 15 of the FCC Rules. These limits are designed to provide reasonable protection against harmful interference in a residential installation.

This equipment generates uses and can radiate radio frequency energy and, if not installed and used in accordance with the instructions, may cause harmful interference to radio communications. However, there is no guarantee that interference will not occur in a particular installation. If this equipment does cause harmful interference to radio or television reception, which can be determined by turning the equipment off and on, the user is encouraged to try to correct the interference by one or more of the following measures: (1) Reorient or relocate the receiving antenna. (2) Increase the separation between the equipment and receiver. (3) Connect the equipment into an outlet on a circuit different from that to which the receiver is connected. (4) Consult the dealer or an experienced radio / TV technician for help.

## Customer Service

-  12-Month Limited Warranty
-  Lifetime Technical Support
-  [support@eufylife.com](mailto:support@eufylife.com)
-  1-800-988-7973(US) Mon-Fri 9am-5pm(PST)

 @EufyOfficial 
  @EufyOfficial 
  @EufyOfficial 
  @EufyOfficial